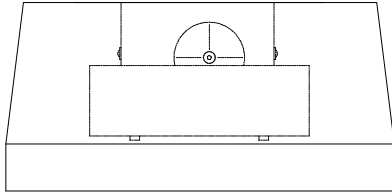


VentAhood switch assignments for "Classic" hoods/liners with halogen lighting and two-speed motors.

WALL MOUNT

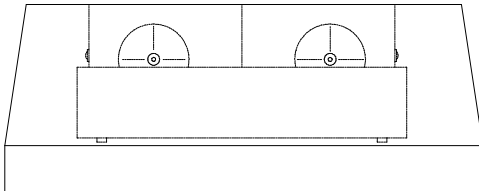
B100 wall mount blower.



Left Switch
White motor,
2-speed,
Hi - Off - Lo

Right Switch
Halogen light
Hi - Off - Lo

B200 wall mount blower.

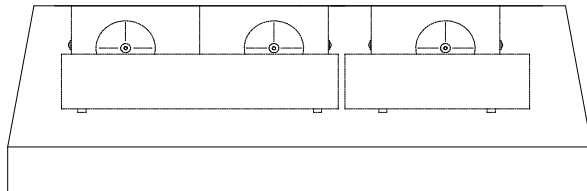


Left Switch
Left, black
motor,
1-speed,
On - Off

Center Switch
Halogen light
Hi - Off - Lo

Right Switch
Right, white
motor,
2-speed,
Hi - Off - Lo

B300 wall mount blower.



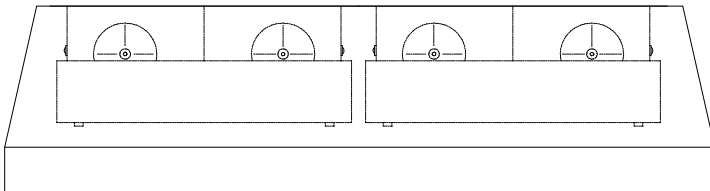
Left Switch
Left, black
motor of the
dual blower.
1-speed,
On - Off

Second Switch
Right, white
motor of the
dual blower.
2-speed,
Hi - Off - Lo

Third Switch
Halogen light
Hi - Off - Lo

Right Switch
Right, white
motor of the
dual blower.
2-speed,
Hi - Off - Lo

B400 wall mount blower.



Left Switch
Left, black
motor of the
left dual
blower.
1-speed,
On - Off

Second Switch
Right, white
motor of the
left dual
blower.
2-speed,
Hi - Off - Lo

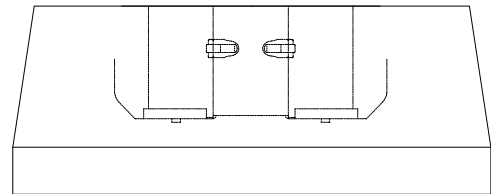
Third Switch
Halogen light
Hi, Off, Lo

Fourth Switch
Left, black
motor of the
right dual
blower.
1-speed,
On - Off

Fifth Switch
Right, white
motor of the
right dual
blower.
2-speed,
Hi - Off - Lo

ISLAND

T200 island blower.

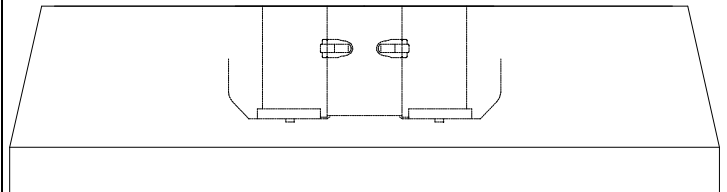


Left Switch
Left, white
motor,
2-speed,
Hi - Off - Lo

Center Switch
Halogen light
Hi - Off - Lo

Right Switch
Right, black
motor,
1-speed,
On - Off

T400 island blower.



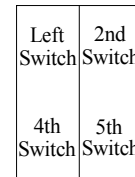
Left Switch
Left, black
motor of the
left dual
blower.
1-speed,
On - Off

Second Switch
Right, white
motor of the
right dual
blower.
2-speed,
Hi - Off - Lo

Third Switch
Halogen light
Hi, Off, Lo

Fourth Switch
Right, white
motor of the
left dual
blower.
2-speed,
Hi - Off - Lo

Fifth Switch
Left, black
motor of the
right dual
blower.
1-speed,
On - Off



Front



Black switch operates 1-speed motor.



Red switch operates 2-speed motor.



White switch operates halogen light.



616 -13th Ave. So.
Hopkins, MN 55343
P: (952) 935-3305
F: (952) 224-3610